



DELIGHT STUDIOS

Finnboda Varvsväg 19B
Nacka 131 72

+46 (0) 857035210

info@delightstudios.com

www.delightstudios.com

Studios & Bookings

bookings@delightstudios.com
T: +46 (0) 857035210

Equipment & Catering

info@delightstudios.com
T: +46 (0) 857035210

Office & Reception

We request that all deliveries for your production be sent before 18:00 the day before production OR after 08:00 on shoot day. All packages are to be marked with your Studio, reference & contact details.

Catering

Delight Studios offers a variety of food & beverages. Wonderful, tasty dishes are prepared and served daily by our chef; everything from simple snacks to a gastronomic main course. Delight Studios cater for all allergies & special requests.

Some of our options include:

Breakfast 1 (90 SEK/pp): Freshly squeezed orange juice, fresh vegetable, cheese and/or turkey sandwiches, boiled eggs and caviar.

Breakfast 2 (145 SEK/pp): Freshly squeezed orange juice, fresh vegetable, cheese and/or turkey sandwiches, boiled eggs and caviar, croissants, berry smoothies, home made overnight oats.

Lunchbuffe 1 (195 SEK/pp) - Warm cooked hearty meal, mixture of salads, fresh bread, cold drinks and home baked brownies.

Lunchbuffe 2 (245 SEK/pp) - Warm cooked hearty meal with a mixture of proteins, mixture of various salads, fresh bread, cold drinks and home baked brownies.

NOTE: Coffee & Tea is included in Studio price and refilled throughout entire production day.

Car Park

Delight Studios has two parking places directly outside of Studio which can be rented out in conjunction with your booking. These parking spots can only be used for lighting or lighting/grip trucks. The cost for this is 250SEK per spot/day and must be reserved prior to production.

Other cars are referred to the usual parking places on the streets near the Studio. For these places, regular parking tickets are bought in the ticket machines on the street or through an app.

Hotels

Elite Hotel Marina Tower Stockholm
Saltsjöqvarns kaj 25
131 71 Nacka
+46 (0) 855570200

Enquire within to receive special CODE for discounts

Taxi's

Taxi Stockholm
+46 (8) 150 000

Delight Studios staff can organize taxi's for you which can then be added to final invoice. Please inform Delight Studios staff should you not wish this service to be available for your team.

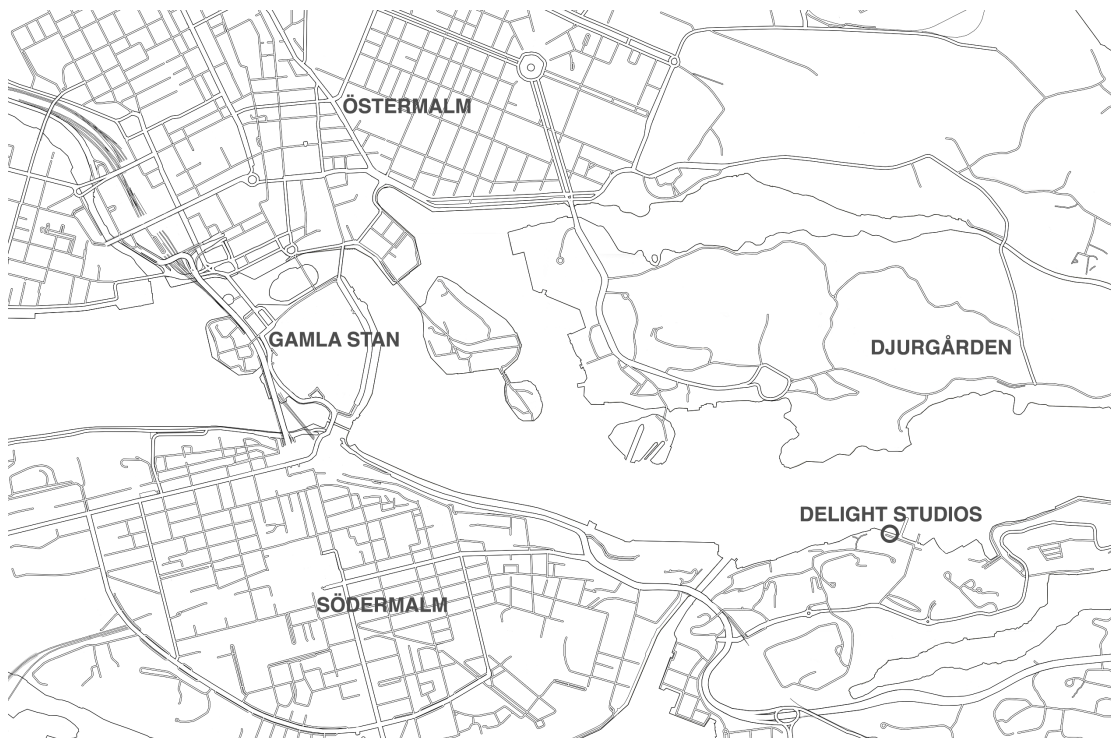
By Car

GPS Coordinates:
Latitude : 59.316224
Longitude: 18.12253

Public Transport

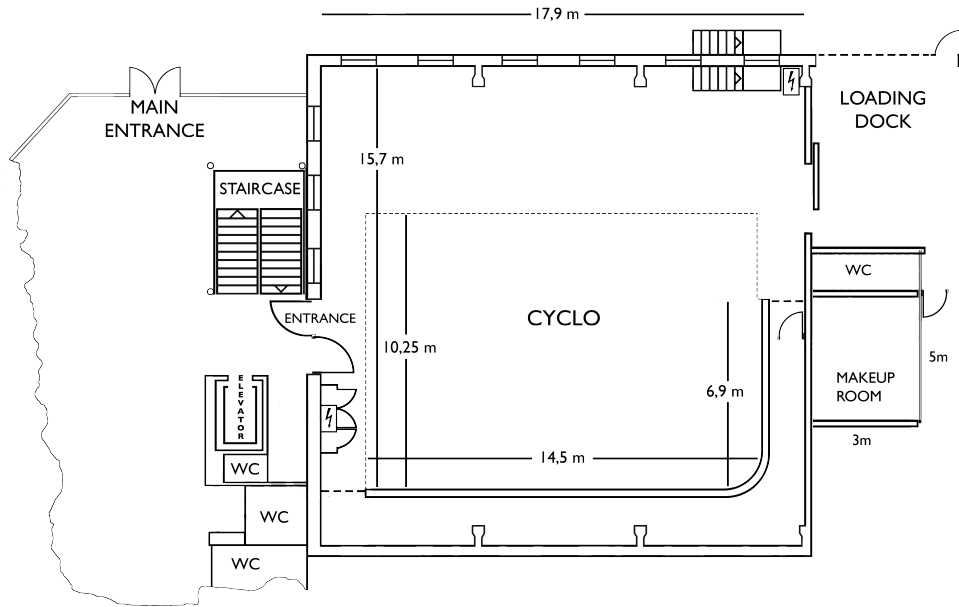
Finnboda Hamn
Ferry 80 from Nybroplan
www.sjovagen.nu

Finnboda Hamn
Bus 402 from Slussen
www.sl.se



STUDIO 1 270 m²

STUDIO I - GROUND FLOOR



Specifications:

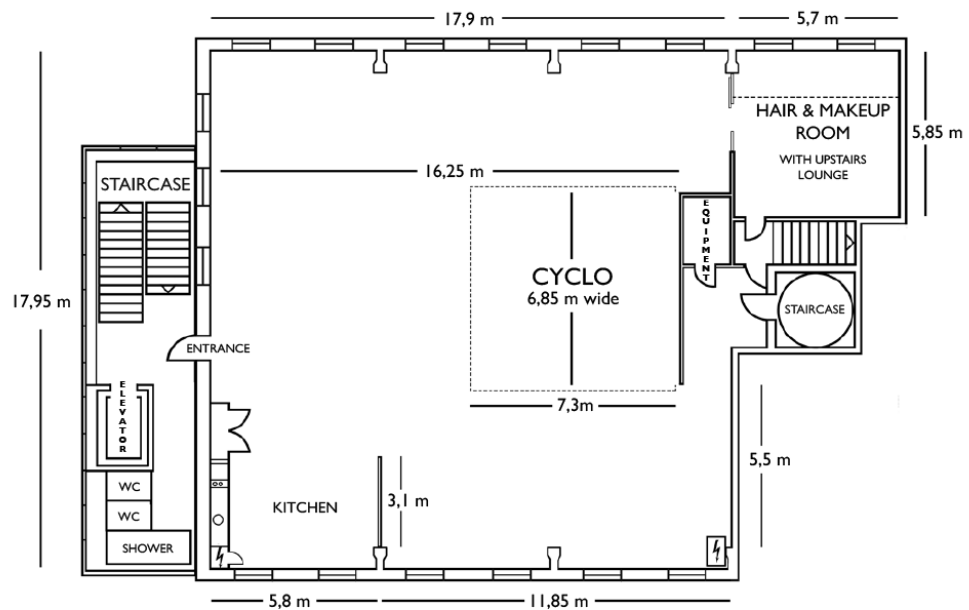
- Wireless internet
- Access to wireless printer
- Professional sound system with audio input
- Coffee/tea station
- Black out option
- Electricity: 2x463, 4x432, 4x416
- Motorized trussing system 7,5x9
- Stylist Kit (Steamer, iron, ironing board, 2 x clothing racks, 2 x bathrobes, 2 x slippers)
- Two Hair & Make-up stations in separate room with toilet and hair cleaning station
- Polyboards & Polyboard holders x 10
- Full professional cinema system including a 10m wide screen, 4k projector and 5.3 Dolby sound (Upon request. Additional charges apply).
- Daylight Studio with cyclorama
- Cyclorama Wall - W: 14,5m + 6,9m H: 6m
- Cyclorama Floor - W: 14,5m D: 10,25m
- North facing large industrial windows
- Ground floor
- Car access via loading dock 2,44x2,50 (wXh)
- White wooden floors
- Floor to ceiling height 6,8m
- Floor to trussing height 5,75m

STUDIO 1



STUDIO 2
325 m²

STUDIO 2 - SECOND FLOOR



Specifications:

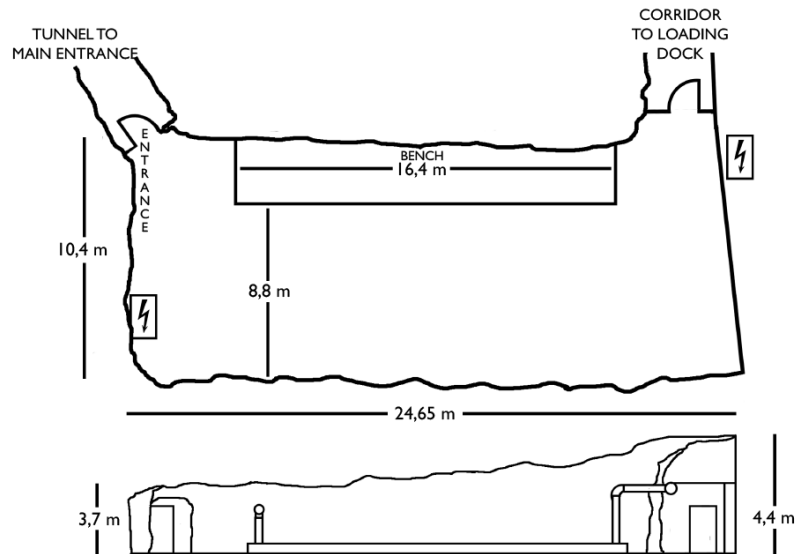
- Wireless internet
- Access to wireless printer
- Professional sound system with audio input
- Coffee/tea station
- Black out option
- Electricity: 1x463, 1x432, 1x416
- Separate Hair & Make-up room + lounge area
- Stylist Kit (Steamer, iron, ironing board, 2 x clothing racks, 2 x bathrobes, slippers)
- Two Hair & Make-up stations
- Polyboards & Polyboard holders x 10
- Kitchen (Upon request. Additional charges apply)
- Daylight Studio with cyclorama
- Cyclorama - H:3,4m W:6,85m D: 7,3m
- North facing floor to ceiling windows
- Second floor, accessible via elevator or stairs
- White washed wooden floors
- Floor to ceiling height 4,5m
- Floor to beam height 3,4m
- Separate Hair & Make-up room

STUDIO 2



STUDIO 3 255 m²

STUDIO 3 - GROUND FLOOR



Specifications:

- Wireless internet
- Access to wireless printer
- Sound system with audio input upon request
- Coffee/tea station
- Electricity: 1x463, 2x432, 2x416
- Stylist Kit (Steamer, iron, ironing board, 2 x clothing racks, 2 x bathrobes & 2 x slippers)
- Hair & Make-up station
- Polyboards & Polyboard holders x 10
- Unique cave space
- Ground floor
- Concrete floors
- Floor to ceiling height 3,7-4,8m

STUDIO 3



THE PIER

14x100m



Specifications:

- The Pier is approximately 14x100m
- Electricity: 1x 463 2x432 2x416 (Max 80AMP)
- Easy access to Studio's facilities
- Whilst renting a Studio at Delight Studios then you will automatically have access to our pier meaning no prior booking necessary.
- For permanent fixtures, exclusive access & events then other rules apply. This is something that needs to be booked in advance and additional fees apply.